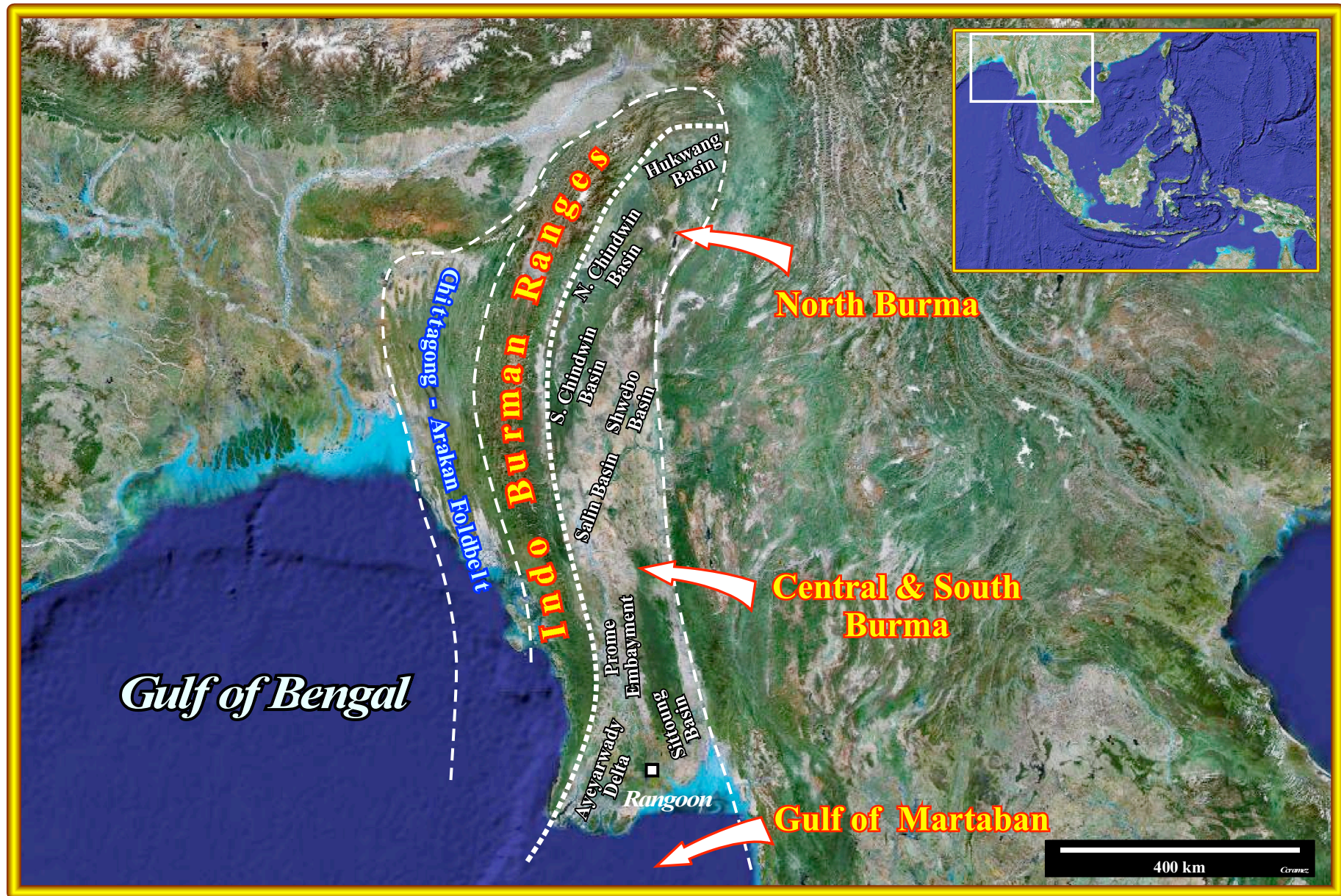


Burma Sedimentary Basins & Fields

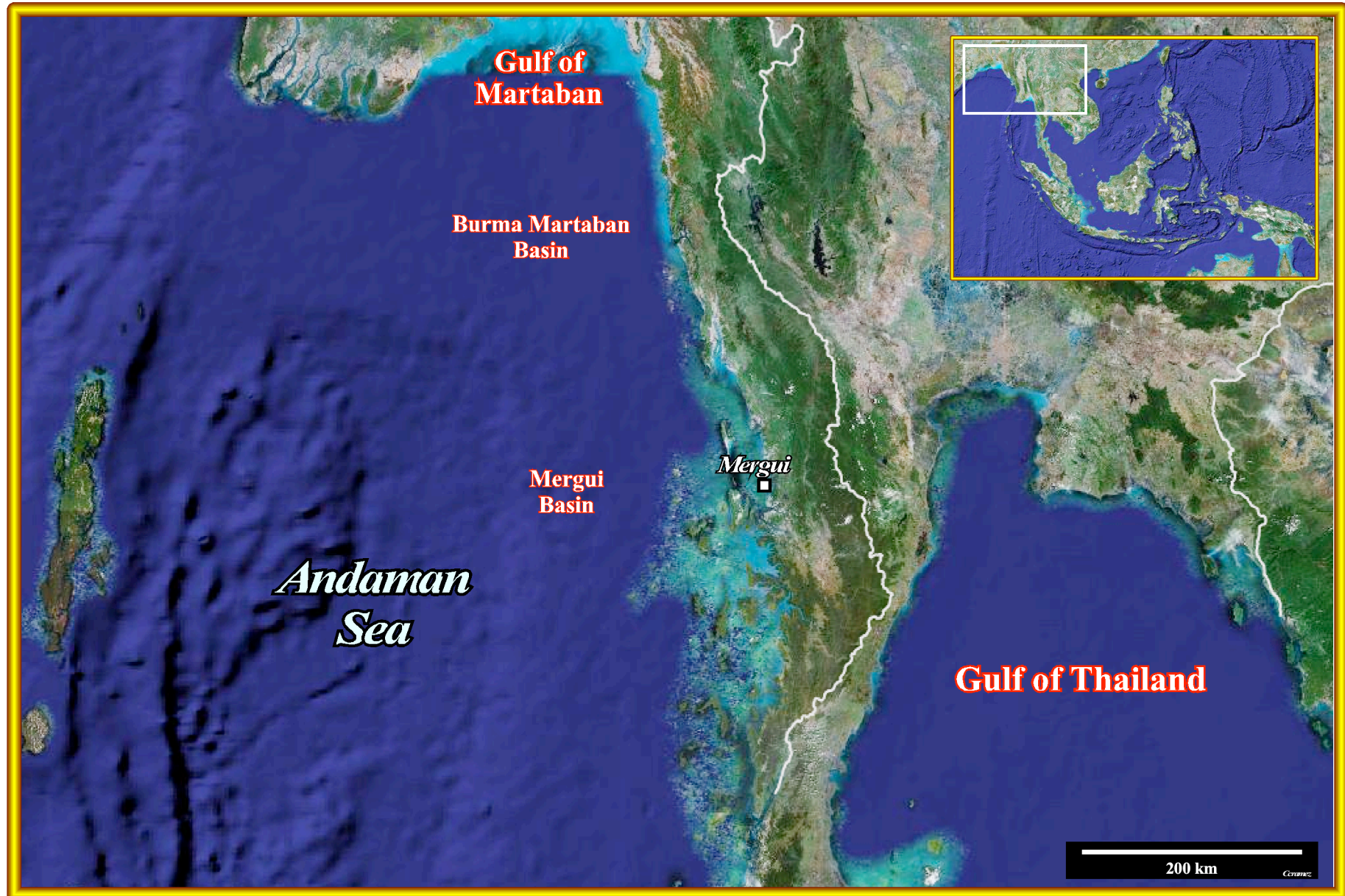
Burma Sedimentary Basins

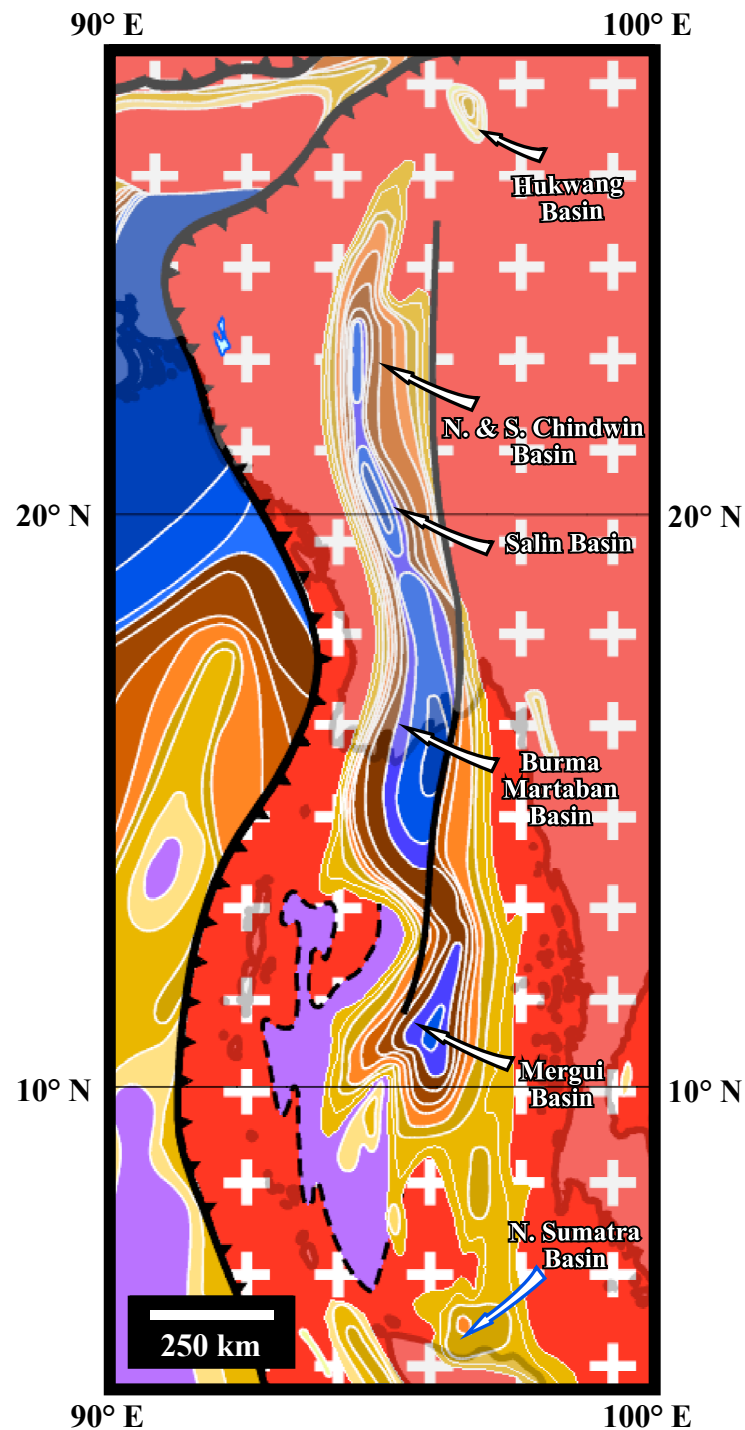
Northern Area



Burma Sedimentary Basins

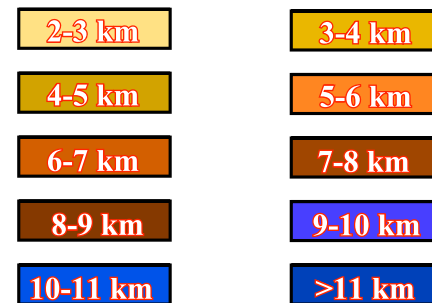
Southern Area





Burma Sedimentary Basins

Thickness of Sediments

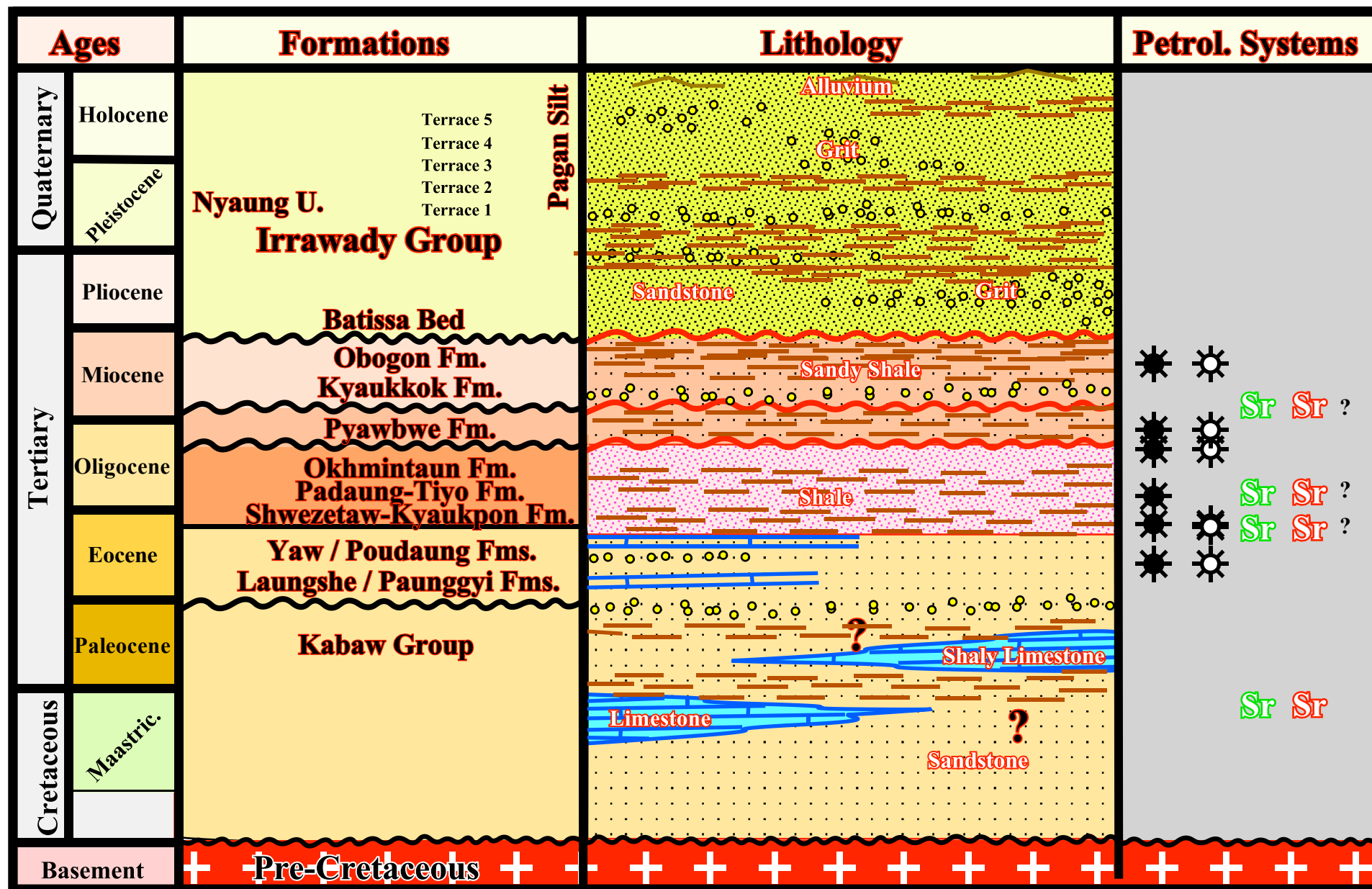


North & South Chindwin Geographic Basins

Carlos Cramez
Switzerland

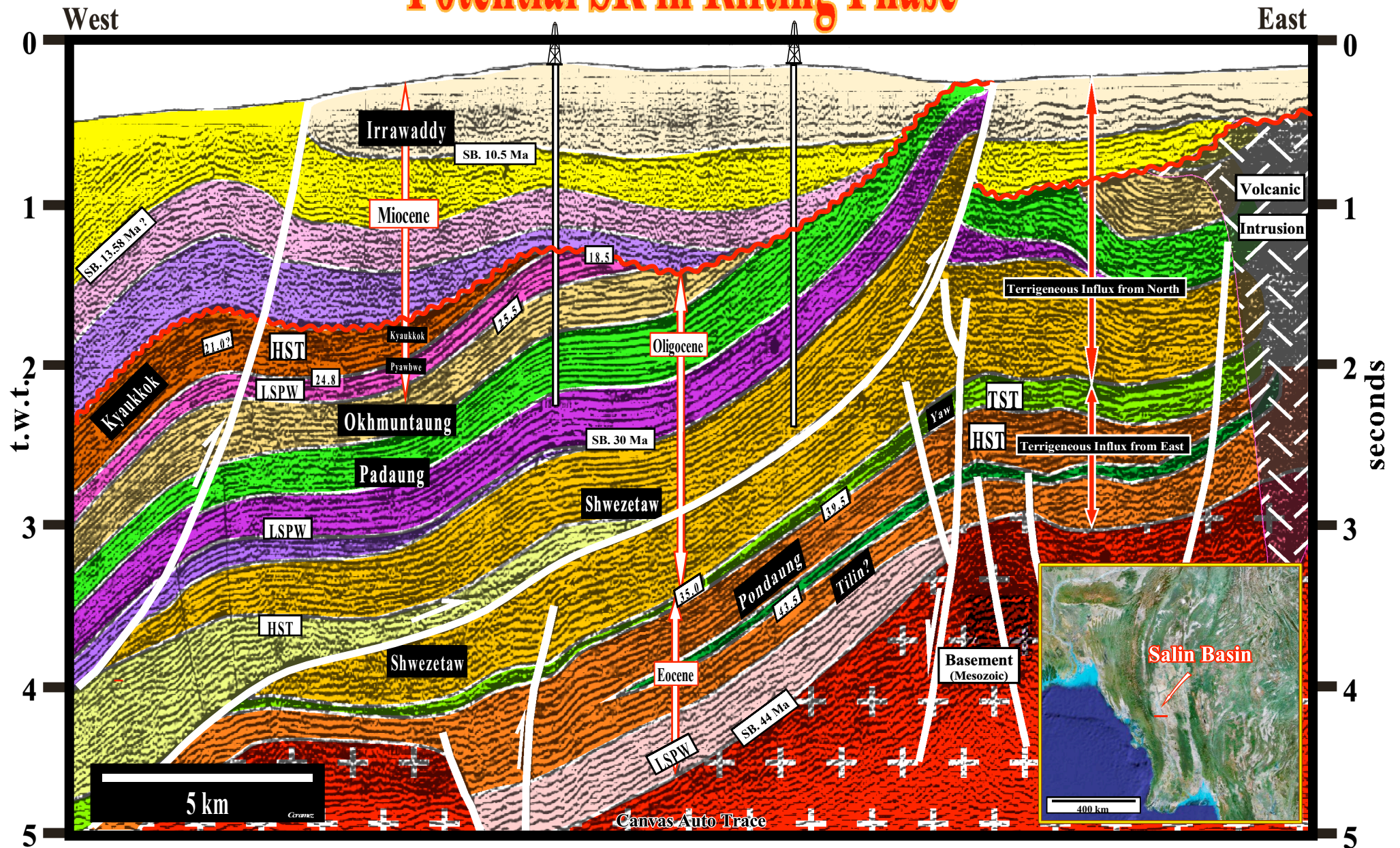
Salin Geographic Basin

Salin Basin Stratigraphy



Backarc Basin (without oceanisation) Strong tectonic inversion & Wrench

Potential SR in Rifting Phase



Prome Embayment

Prome Embayment Stratigraphy

Ages		Formations	Lithology	Petrol. Systems				
Quaternary	Holocene	Irrawady Group						
	Pleistocene							
Tertiary	Pliocene	Peu Group						
	Miocene							
	Oligocene				Obogon Fm. Kyaukkok Fm. Pyawbwe Fm. Okhmintaun Fm. Padaung-Tiyo Fm. Shwezetaw-Kyaukpon Fm.			
	Eocene				Yaw Fm. Pondaung Fm.			
	Paleocene							
					Maastric.			
Cretaceous								
	Basement				Pre-Cretaceous			

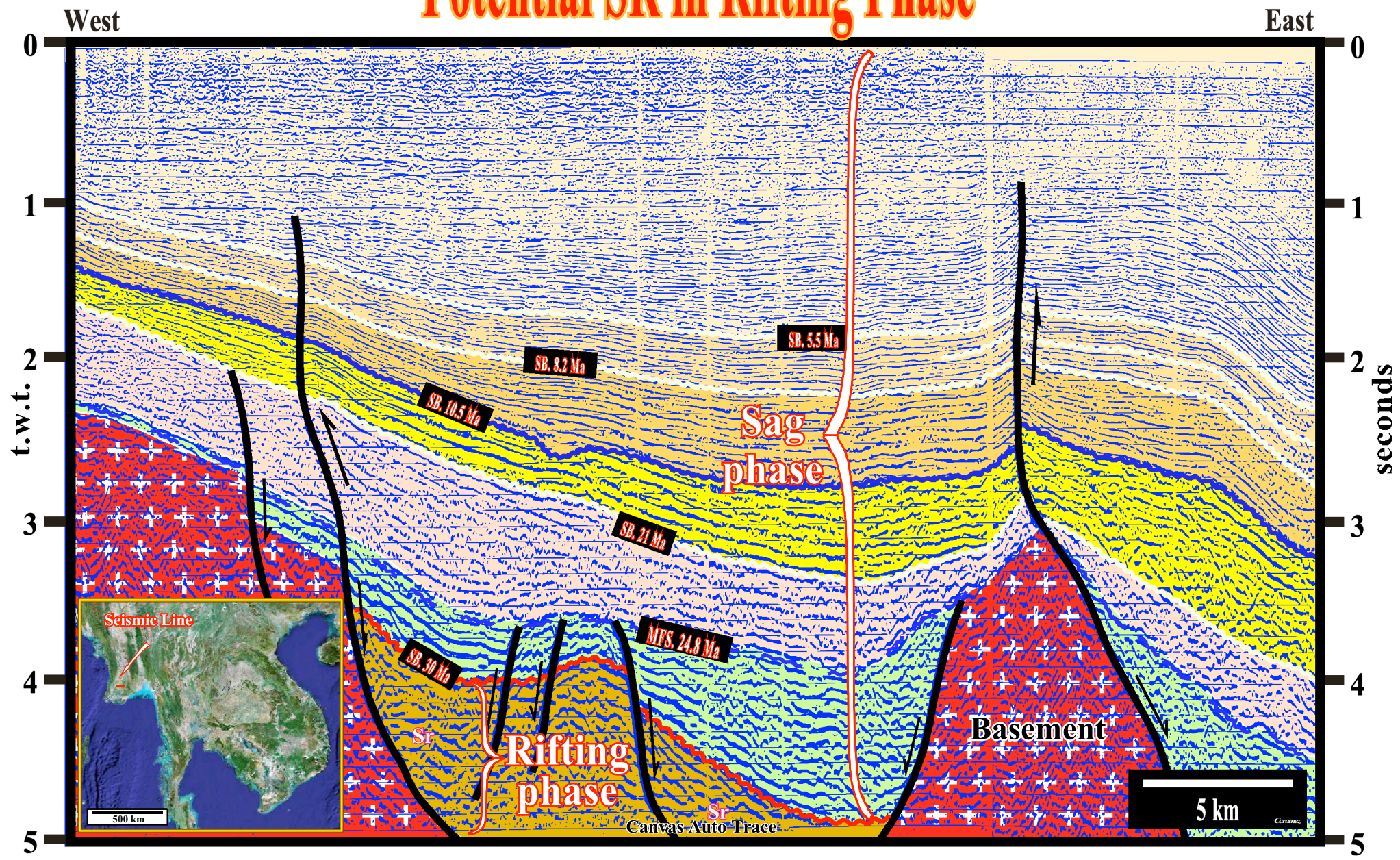
Ayeyarwady Delta

Ayeyarwady Delta Stratigraphy

Ages		Formations	Lithology	Petrol. Systems
Quaternary	Holocene	Irrawady Group		
	Pleistocene			
Tertiary	Pliocene	Kathabung Fm. Kwingyaung Fm. Tumyaung Fm.		
	Miocene			
	Oligocene			
	Eocene	Taungale Fm. Kanbala Fm.		
	Paleocene			
	Cretaceous	Maastric.		
Basement		Pre-Cretaceous		

Back-arc Basin (without oceanisation) Subtle tectonic inversion

Potential SR in Rifting Phase



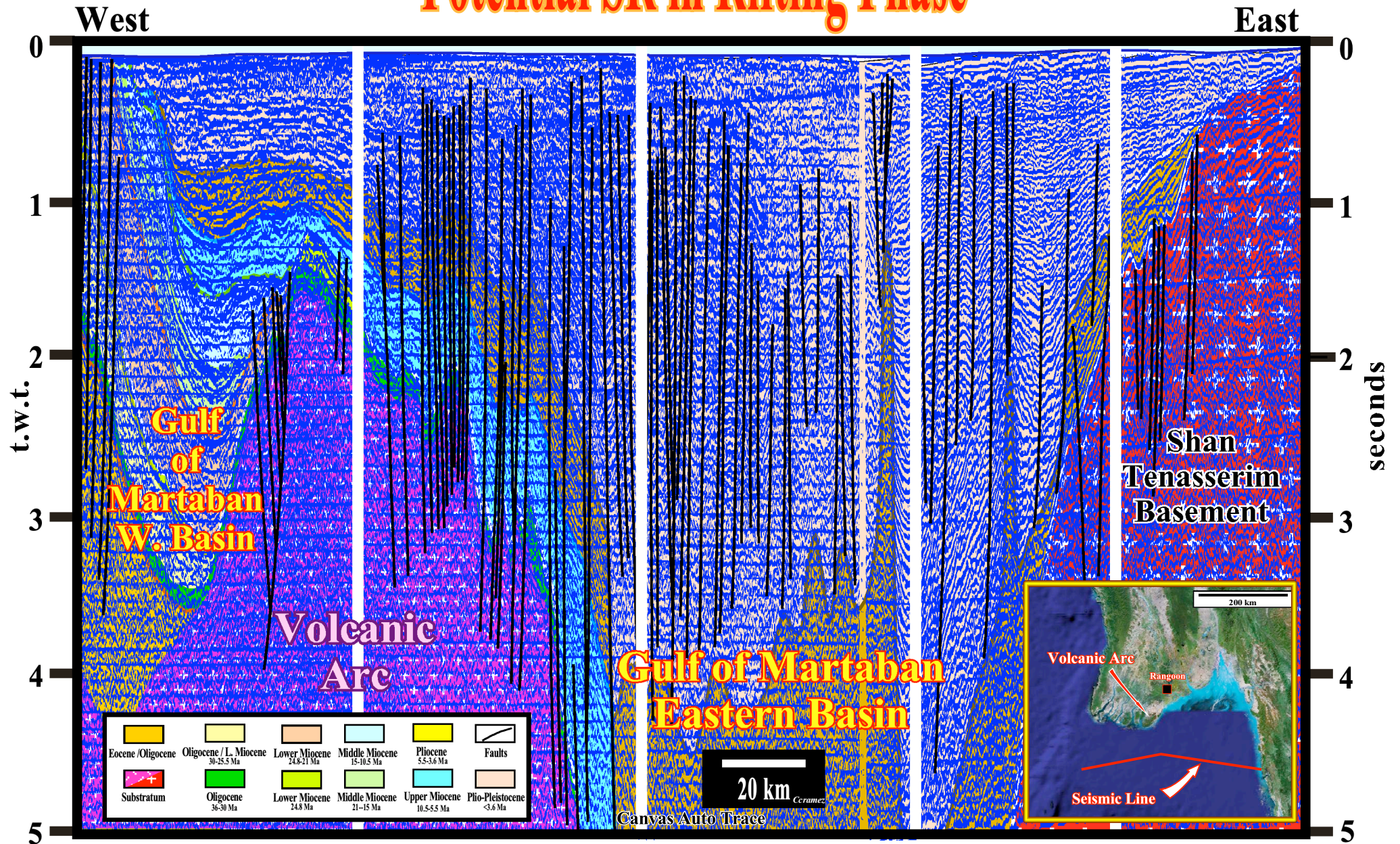
Gulf of Martaban Geographic Basin

Stratigraphy Martaban

in progress

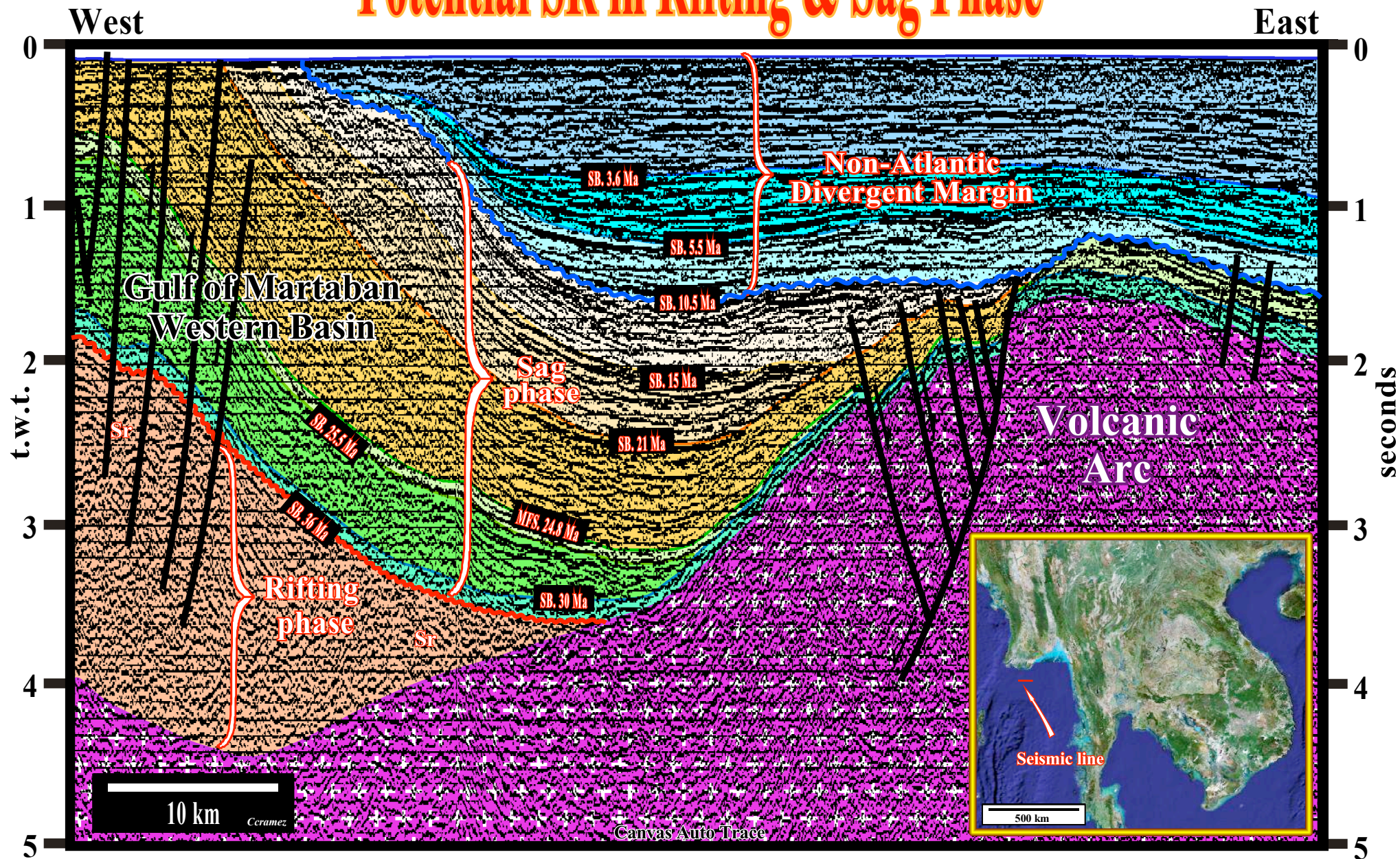
Back-arc Basins (without oceanisation) Strong tectonic inversion

Potential SR in Rifting Phase



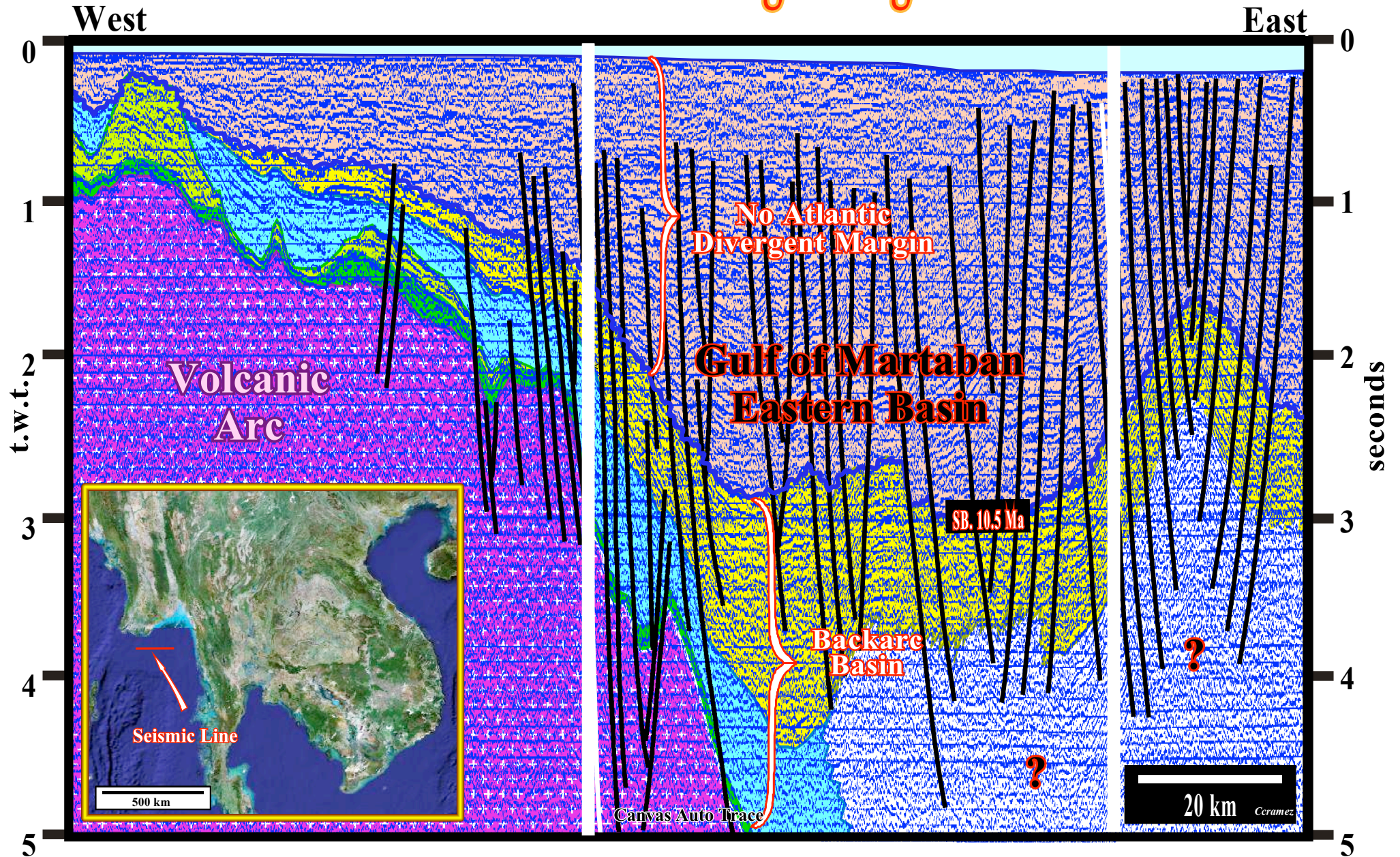
Back-arc Basin
(without oceanisation)
Strong tectonic inversion

Potential SR in Rifting & Sag Phase



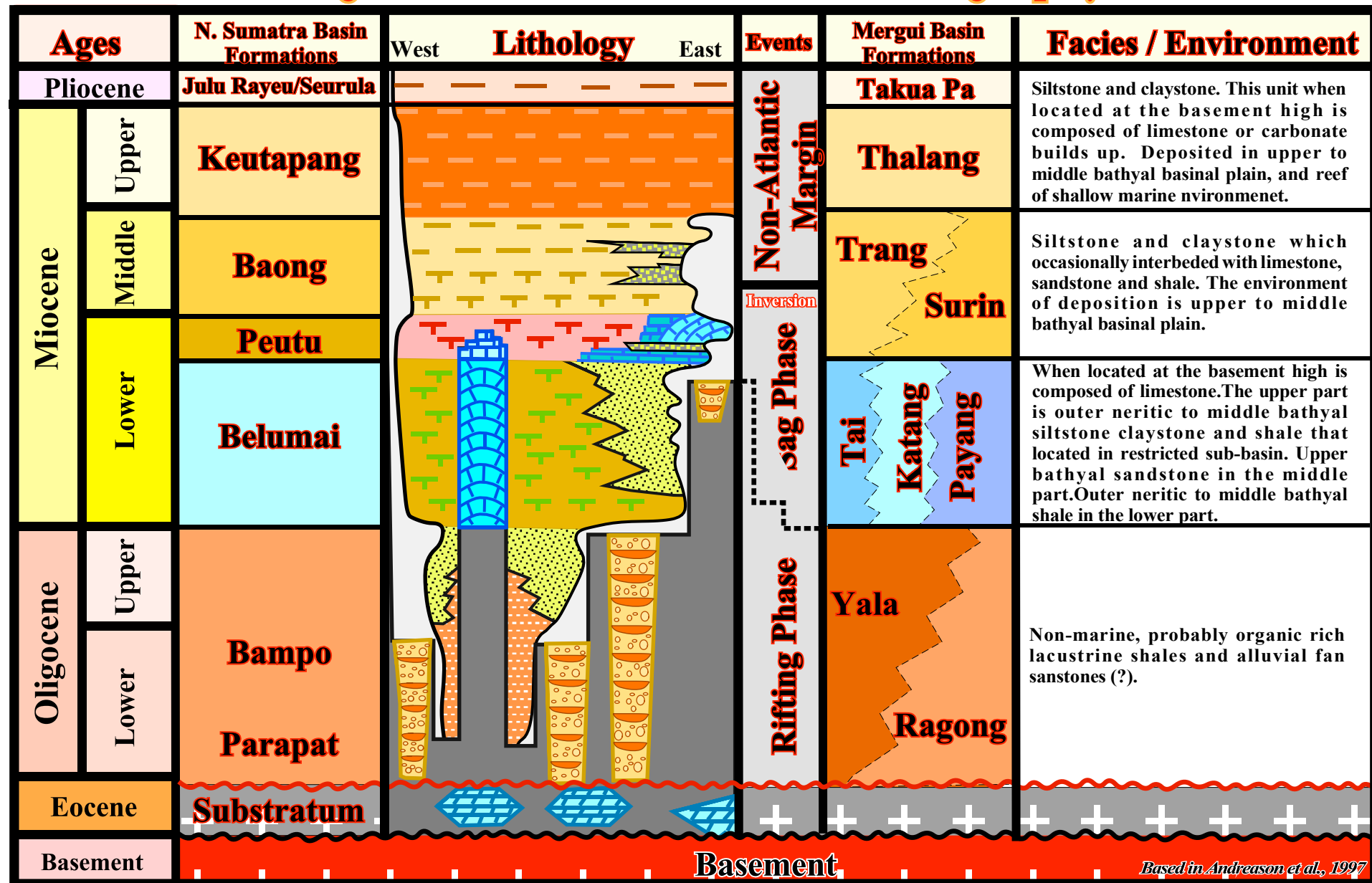
Back-arc Basin
(without oceanisation)
Subtle inversion

Potential SR in Rifting & Sag Phase



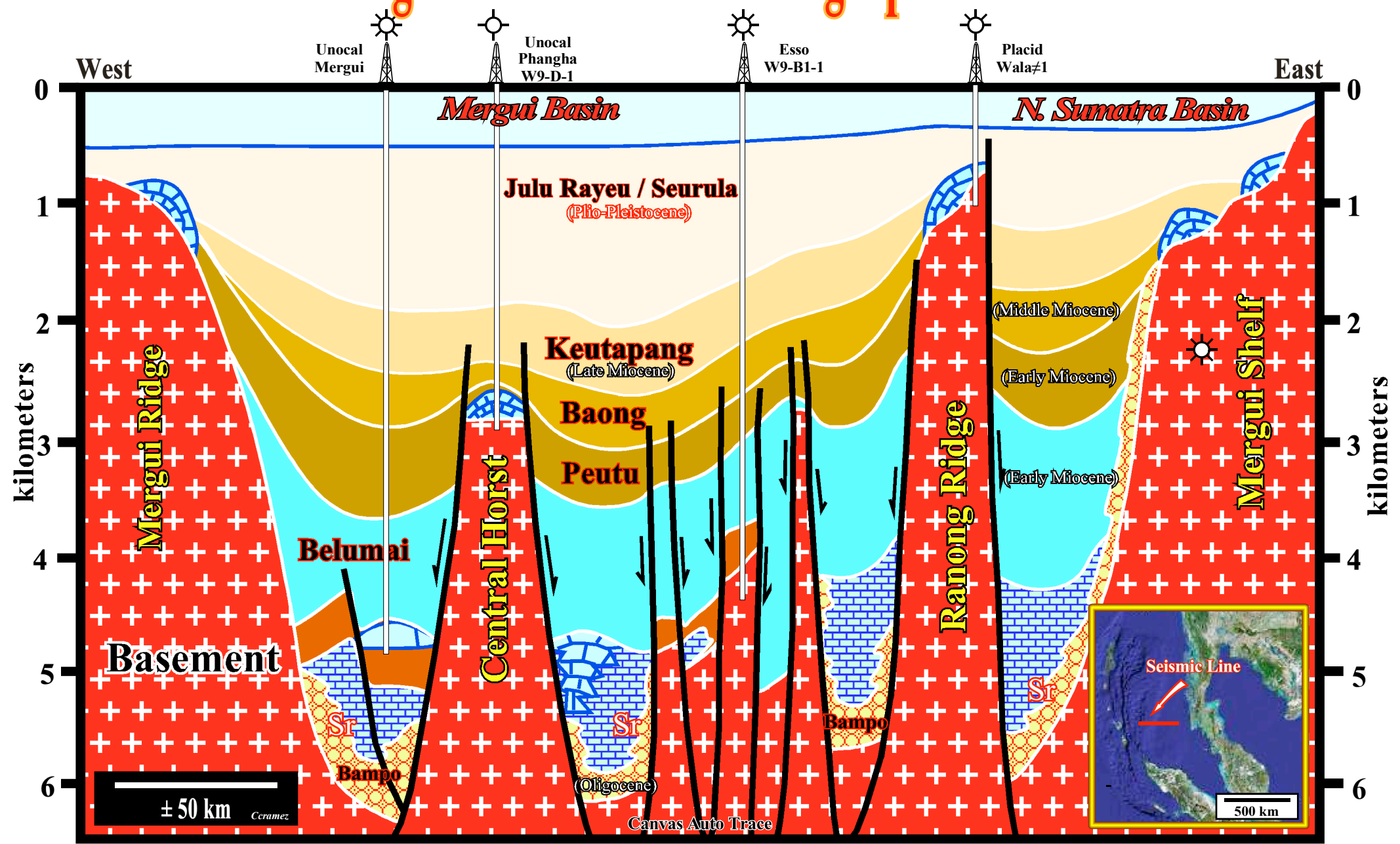
Mergui Geographic Basin

Mergui-North Sumatra Basin Stratigraphy



Back-arc Basin
(without oceanisation)
No tectonic inversion

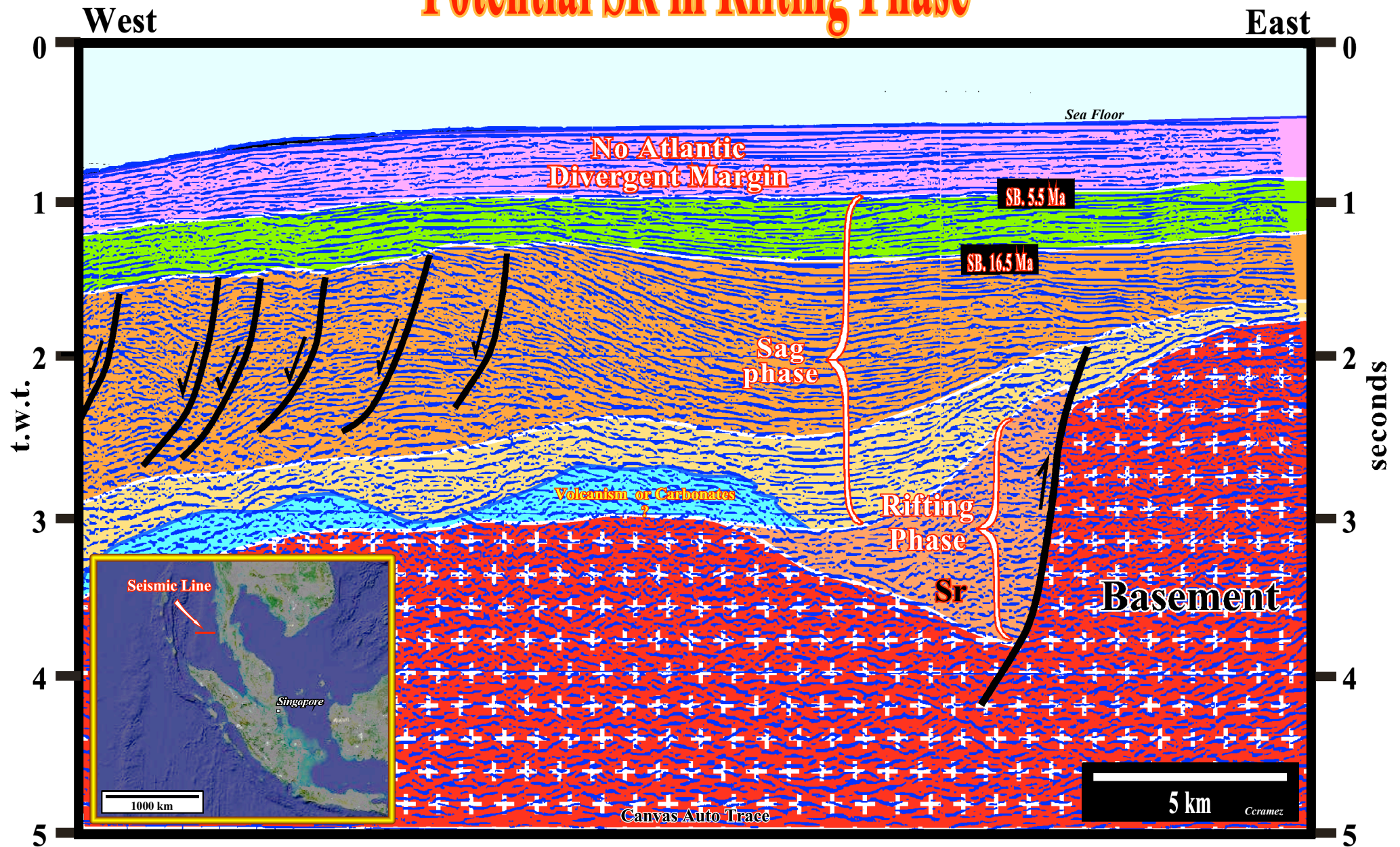
Mergui-North Sumatra Geographuc Basin



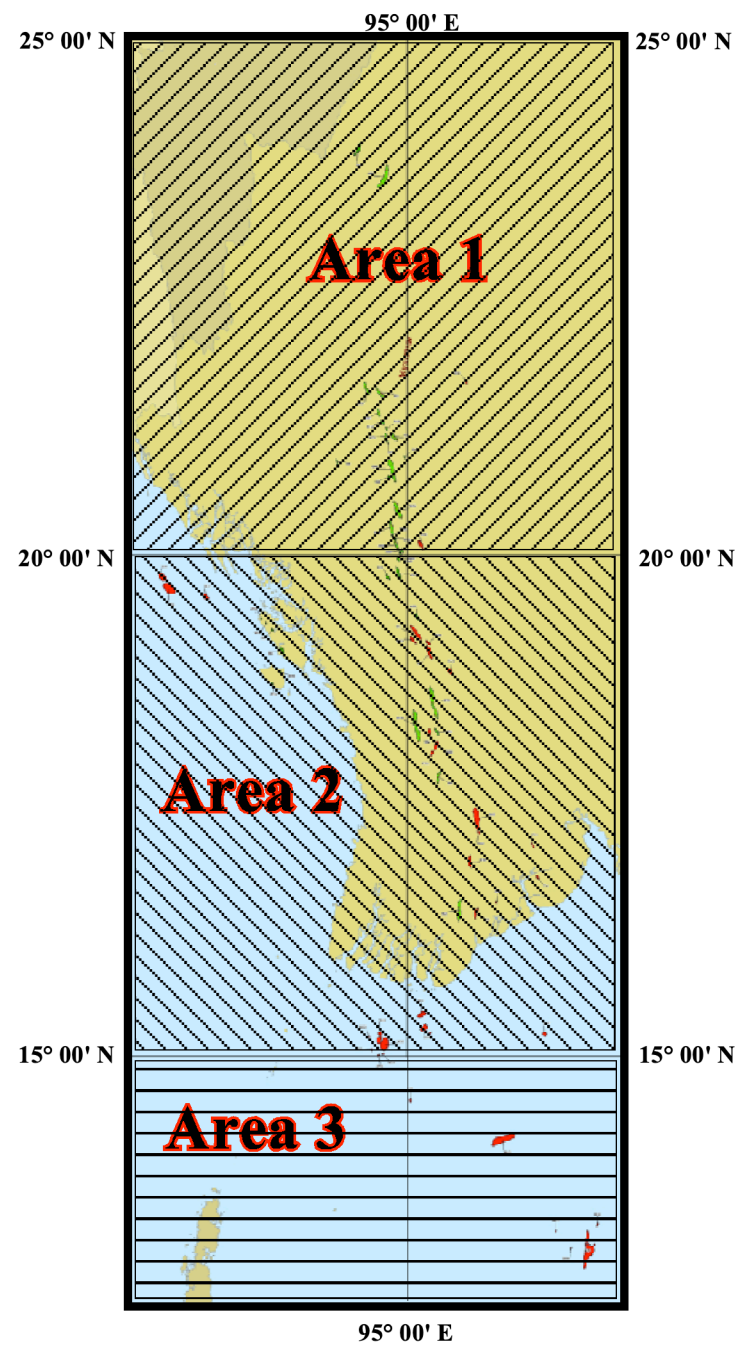
Adapted from Andreason et al. 1997

Back-arc Basin
(without oceanisation)
Subtle inversion

Potential SR in Rifting Phase

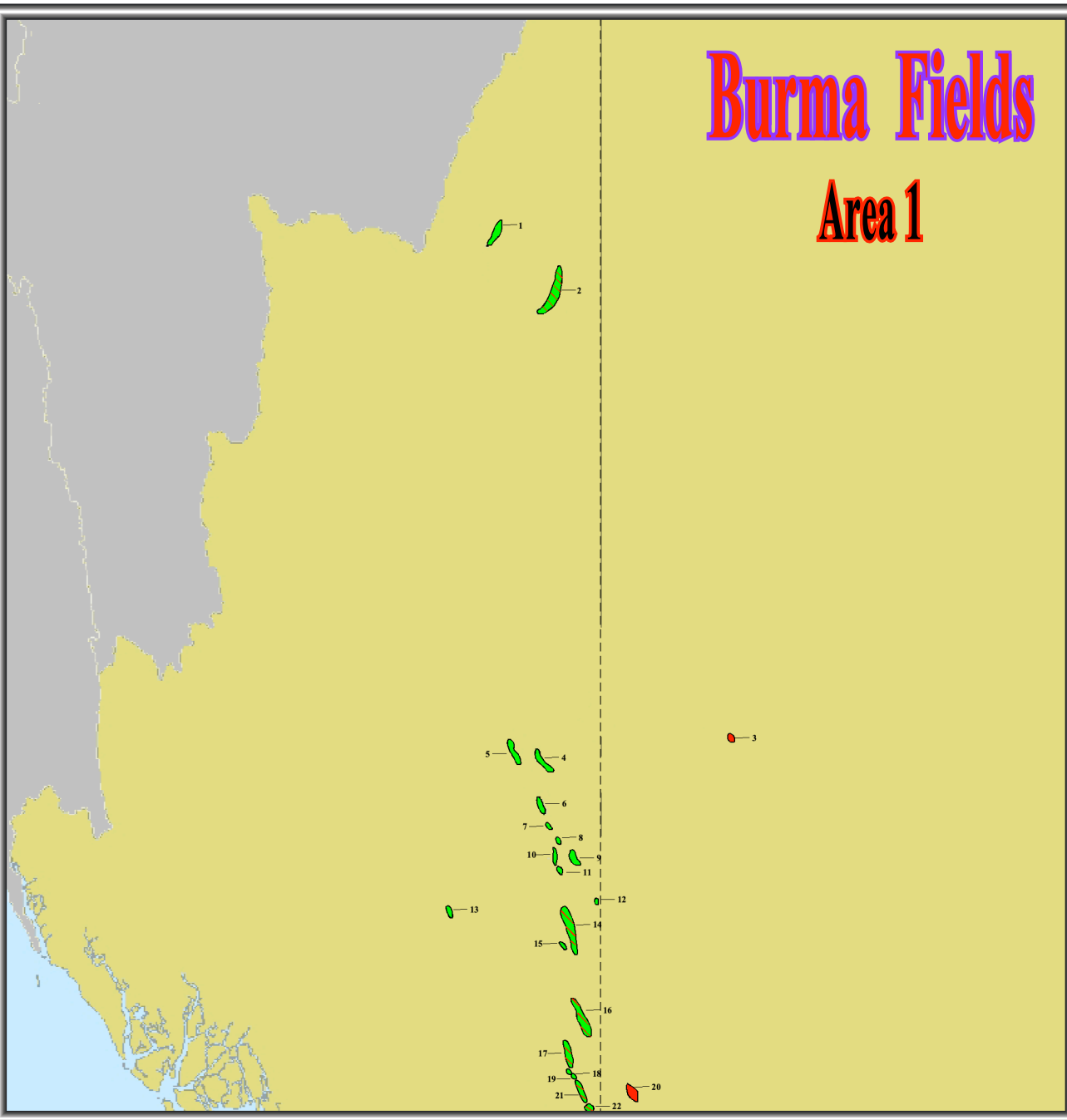


Burma Fields



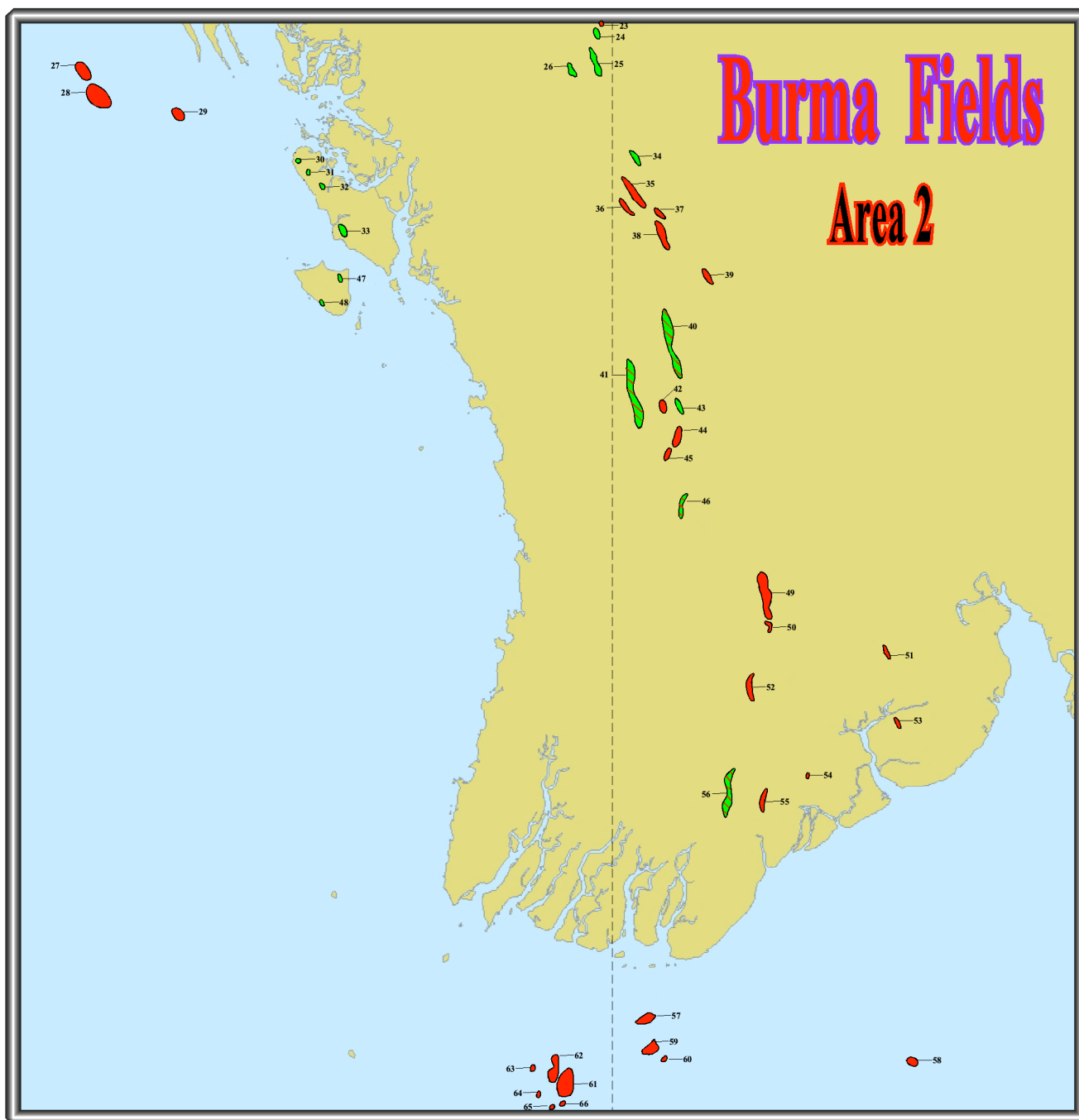
Burma Fields

Area 1



Fields' Names

- 1- **Yenan**, oil, < 1 Mb, 42km², abd., Myanmar Oil & Gas Enterprise
- 2- **Ledaung**, oil, < 1Mb, ?, abd. no improved recv.
- 3- **Nawadat 1**, gas, < 100,000 Mcfg, ?,discovery
- 4- **Kyaukkwet**, gas, oil, < 100,000 Mcfg, ?, prod., M.O.G.E.
- 5- **Letpando**, oil, gas, 1-10 Mb, ?, prod., MO.G.E.
- 6- **Thargyitaung**, oil, gas, 10-100 Mb, 8 km², prod., MO.G.E.
- 7- **Sabe**, gas, oil, < 100,000 Mcfg, ?, prod., M.O.G.E.
- 8- **Pauktaw**, oil, < 1 Mb, ?, abd, no impr. recv., M.O.G.E.
- 9- **Pagan-Tuyintaung 1**, oil, gas, 1-10 Mb, appr., Chinnery Assets Ltd.
- 10- **Ayadaw**, gas, oil, 100,000-1mil mmcfg, 16 km², prod., M.O.G.E.
- 11- **Kyaukpyu-Yenandaung**, oil, < 1 Mb, ?, abd, no impr. recv.
- 12- **Tetma**, oil, 1-10 Mb, 0.78 km², temp. shut-in, Chinnery Assets Ltd.
- 13- **Ledaung**, oil, < 1 Mb, abd. no impr. recv.
- 14- **Chauk-Lanywa**, oil, gas100-1000Mb, 20.25 km², prod. impr. recv., Goldpetrol Joint Operations Co Inc.
- 15- **Kupyu 1**, oil, < 1 Mb, ?, discovery, Goldpetrol Joint Operat. Co Inc.
- 16- **Yenangyaung**, oil, gas, 100-1000 Mb, 6.47 km², prod, impr. recov. Goldpetrol Joint Operations Co Inc.
- 17- **Mann**, oil, gas, 100-1000 Mb, 42 km², prod, impr. recv., Myanmar Petroleum Resources Ltd.
- 18- **Shwelinban**, oil,1-10 Mb, ?, abd, no impr. recv., M. P. R. Ltd.
- 19- **Minbu**, oil, 1-10 Mb, ?, abd, no impr. recv., M. O. G. E.
- 20- **Ondwe 1**, gas, < 100,000 Mcfg, 30 km², discovery
- 21- **Htauksabin**, oil, gas, 10-100 Mb, 36 km², prod., Focus Energy
- 22- **Kanni**, oil, gas, 10-100 Mb, 10km², prod., Focus Energy



64- **3DB-1**, gas, < 100,000 Mscfg, dis., Total E&P Myanmar

65- **M-5/B-1**, gas, < 100,000 Mscfg, discover, Total E&P Myanmar

66- **Sein**, gas, 100,000-1mil Mscfg, ?, prod., Total E&P Myanmar

23- **Peppi**, gas, oil, < 100,000 Mscfg, 10 km², intermit. prod., Focus Energy

24- **Tagaing**, oil, < 1Mb, ?, abd, no impr. recv. M.O.G.E.

25- **Mindeggyi**, oil, < 1 Mb, ?, intermit. prod., M.O.G.E.

26- **Yenanma**, oil, 1-10 Mb, 0.2 km², prod. M.O.G.E.

27- **Shwe Phyu 2**, gas, 1-10 million Mcfg, disc., Daewoo Petroleum E & P

28- **Shwe 1 ST1**, gas, 1-10 million Mcfg, 60 km², disc., Daewoo P E & P

29- **Mya 1**, gas, 100,000-1mil Mcfg, ?, disc., Daewoo Petroleum E & P

30- **Leikkamaw**, oil, < 1Mb, ?, abd, no impro. recv.

31- **Kyaukpyauk**, oil, < 1 Mb, ?, abd, no impro. recv.

32- **Kyaukpyu-Yenandaung**, oil, < 1 Mb, ?, abd, no impro. recv.

33- **Ledaung**, oil, < 1 Mb, ?, abd, no impro. recv.

34- **Padaukpin**, oil, 1-10 Mb, 18 km², abd, no impr. recv.

35- **Pyaye**, gas, < 100,000 Mcfg, 60 km², temporarily shut-in

36- **Natmi**, gas, < 100,000 Mcfg, 20 km², temporarily shut-in

37- **Pyalo North**, gas, < 100,000 Mcfg, 14 km², tempor. shut-in, M.O.G.E.

38- **Pyalo**, gas, < 100,000 Mcfg, 48 km², temporarily shut-in

39- **Shwegu 2**, gas, < 100,000 Mcfg, discovery

40- **Pyay (Prome Hills)**, oil, gas, 10-100 Mb, 70 km², prod., Chinnery Assets Ltd

41- **Htantabin**, gas, oil, < 100,000 Mcfg, ?, Intermit. prod., M.O.G.E.

42- **Kyangin 4**, gas, < 100,000 Mscfg, ?, discovery, M.O.G.E.

43- **Myanaung**, oil, gas, 10-100 Mb, 20 km², prod, impro. recv., M.O.G.E.

44- **Shwepyitha**, gas, condensate, 100,000-1mil Mscfg, ?, prod., M.O.G.E.

45- **Inbyin 3**, gas, < 100,000 Mcfg, ?, disc., M.O.G.E.

46- **Kyontani 1**, oil, gas, < 1 Mb, ?, discovery

47- **Hinzane**, oil, < 1 Mo, ?, abd, no impro. recv.

48- **Yenanchaung (Cheduba Is.)**, oil, < 1 Mb, ?, abd, no impro. recv.

49- **Apyauk**, gas, condensate, 100,000-1mil Mcfg, ?, prod., M.O.G.E.

50- **Okkan 1**, gas, < 100,000 Mcfg, ?, disc., M.O.G.E.

51- **Indaing**, gas, < 100,000 Mcfg, ?, prod., M.O.G.E.

52- **Nyaungdon**, gas, condensate, 100,000-1mil Mscfg, ?, prod., M.O.G.E.

53- **Syriam**, gas, < 100,000 Mcfg, ?, abd, no impro. recv., M.O.G.E.

54- **Sabagyisan 1**, gas, < 100,000 Mcfg, ?, disc., M.O.G.E.

55- **Kyaiklat 3**, gas, cond, < 100,000 Mcfg, ?, disc., M.O.G.E.

56- **Payagon**, gas, cond, oil, < 100,000 Mcfg, ?, temp. shut-in, M.O.G.E.

57- **3CA-X**, gas, condensate, 100,000-1mil Mcfg, ?, discovery

58- **M-07 2**, gas, < 100,000 Mscfg, ?, discovery

59- **3CA-2**, gas, 100,000-1mil Mscfg, ?, dis., Total E&P Myanmar

60- **3CA-2**, gas, 100,000-1mil Mscfg, ?, dis., Total E&P Myanmar

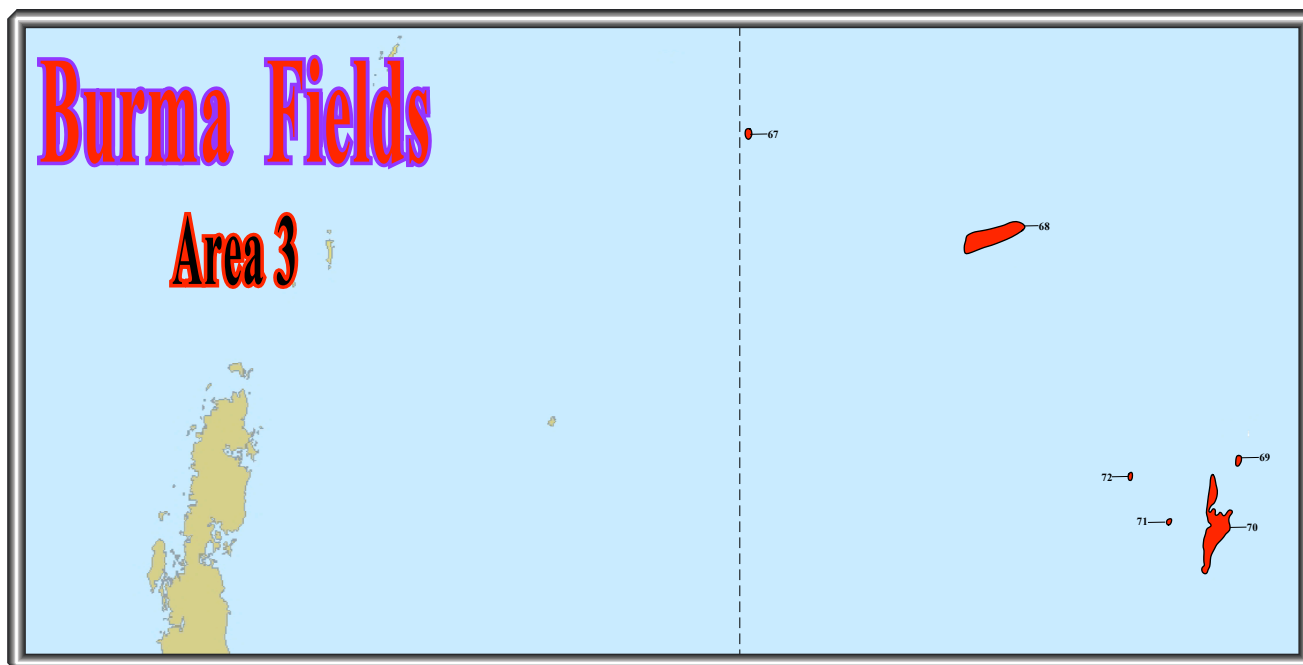
61- **Yadana**, gas, 1-10 million Mscfg, 60 km², prod., Total E&P Myanmar

62- **Badamyar 1 / 3DA-1**, gas, 100,000-1mil Mscfg, ?, disc., Total E&P Myanmar

63- **3DE-1**, gas, < 100,000 Mscfg, ?, disc., Total E&P Myanmar

Burma Fields

Area 3



Fields' Names

- 67- **4BA 1**, gas, < 100,000 Mcfg, ?, discovery
- 68- **Shwepyithay 1**, gas, 100,000-1mil Mcfg, ?, discovery
- 69- **Yemahnaung 1**, gas, < 100,000 Mcfg, ?, disc., Petronas Carigali Myanmar Int.
- 70- **Yetagun**, gas, condensate, 1-10 million Mcfg, 280 km², pro., P.C.M.I.
- 71- **Myeik 1**, gas, < 100,000 Mcfg, ?, disc., Petronas Carigali Myanmar Intern.
- 72- **Aung Zay Ya 1**, gas, condensate, 100,000-1mil Mcfg, ?, disc., P.C.M.I.

Reserves (Myanmar)

Basin Name	Field Name	Prod Status	Loc	Disc Date	Oil Rec PP Mmb	Gas Rec PP Mmscf	Cond Rec PP Mmb	Total Rec Mmboe (PP)	Oil in Place PP Mmb	Gas in Place PP Mmscf	Cond in Place PP Mmb	Total Place Mmboe (PP)	Oil Remain PP Mmb	Gas Remain PP Mmscf	Cond Remain PP Mmb	Total Remain PP Mmboe	Cum Oil Prod Year	Cum Oil Prod MMb	Cum Gas Prod Year	Cum Gas Prod Mmscf	Cum Cond Prod Year	Cum Cond Prod MMb	Cum Total Prod Year	Cum Total Prod Mmb
Irrawaddy Delta	Apyauk	Producing	Onshore	1991		450000	0.4	75.4		640000		106.67		150683	0.29	25.4			2005	299317	2003	0.11		50
Irrawaddy Delta	Kyauklai 3	Discovery	Onshore	1985		10000	0.2	1.87				0		10000	0.2	1.87								0
Irrawaddy Delta	Kyontani 1	Discovery	Onshore	1981	0.02	30		0.03				0	0.02	30		0.03								0
Irrawaddy Delta	Nyaungdon	Producing	Onshore	1999		220000	0.55	37.22		365000		60.83		97832	-0.92	15.39			2005	122168	2005	1.47		21.83
Irrawaddy Delta	Okkan 1	Discovery	Onshore	1994		2000		0.33		3600		0.6		2000		0.33								0
Irrawaddy Delta	Payagon	Temp shut-in	Onshore	1959	0.2	60000	0.05	10.25				0	0.11	13397	0.05	2.39	1990	0.09	1994	46603				7.86
Irrawaddy Delta	Sabagyisan 1	Discovery	Onshore	2000		500		0.08		2500		0.42		500		0.08								0
Pyay Embayment	Htantabin	Intermit prod	Onshore	1981	1	40000		7.67				0	0.44	33360		6	1987	0.56	1987	6640				1.67
Pyay Embayment	Inbyin 3	Discovery	Onshore	1984		10000		1.67				0		10000		1.67								0
Pyay Embayment	Kyangin 4	Discovery	Onshore	1981		500		0.08				0		500		0.08								0
Pyay Embayment	Myanaung	Prod, imp recov	Onshore	1964	34	200000		67.33	79			79	10.42	158757		36.88	2005	23.58	2001	41243				30.45
Pyay Embayment	Natmi	Temp shut-in	Onshore	1972		10000		1.67		15000		2.5		10000		1.67								0
Pyay Embayment	Padaukpin	Abd,no imp recv	Onshore	1905	1.2			1.2				0	0				1942	1.2						1.2
Pyay Embayment	Pyalo	Temp shut-in	Onshore	1969		45000		7.5		65000		10.83		38100		6.35			1989	6900				1.15
Pyay Embayment	Pyalo North	Temp shut-in	Onshore	1984		10000		1.67		15000		2.5		10000		1.67								0
Pyay Embayment	Pyay (Prome Hills)	Producing	Onshore	1965	24.27	200000		57.6	63.5			63.5	12.19	141544		35.78	2005	12.08	2005	58456				21.82
Pyay Embayment	Pyaye	Temp shut-in	Onshore	1926		66550		11.09		100000		16.67		0					1994	66550				11.09
Pyay Embayment	Shwegu 2	Discovery	Onshore	1994		2000		0.33		3600		0.6		2000		0.33								0
Pyay Embayment	Shwepyitha	Producing	Onshore	1968		120000	3	23				0		17904	-0.03	2.95			2005	102096	2005	3.03		20.05
Salin Sub-basin	Ayadaw	Producing	Onshore	1887	1	200000		34.33	6.25	333000		61.75	0.24	65189		11.1	1994	0.76	2005	134811				23.23
Salin Sub-basin	Chauk-Lanywa	Prod, im recov	Onshore	1901	400	198000		433	1000	1042000		1173.67	252.07	48522		260.16	2005	147.9	2005	149478				172.84
Salin Sub-basin	Htaukshabin	Producing	Onshore	1978	27	85000		41.17	142.8	130000		164.47	5.09	52155.5		13.78	2005	21.91	2005	32845				27.38
Salin Sub-basin	Kanni	Producing	Onshore	1985	16	35000		21.83	42.2	50000		50.53	2.4	3839.39		3.04	2005	13.6	2004	31161				18.79
Salin Sub-basin	Kyaukwet	Discovery	Onshore	1990	0.02			0.02	0.1			0.1	0.02			0.02								0
Salin Sub-basin	Kyaukkwet	Producing	Onshore	1995	1	75000		13.5	8.3	100000		24.97	0.65	65037		11.49	2005	0.35	2005	9963				2.01
Salin Sub-basin	Letpando	Producing	Onshore	1974	3.25	15000		5.75	16.25			16.25	1	7002		2.17	2005	2.25	2005	7998				3.58
Salin Sub-basin	Mann	Prod, imp recov	Onshore	1970	207	250000		248.67	517.5	350000		575.83	93.34	186692		124.46	2005	113.7	2005	63308				124.21
Salin Sub-basin	Minbu	Abd,no imp recv	Onshore	1910	3.3			3.3	16.5			16.5	0.04			0.04	1942	3.26						3.26
Salin Sub-basin	Mindegyi	Intermit prod	Onshore	1977	0.05			0.05	0.25			0.25	0.05			0.05								0
Salin Sub-basin	Ngahlaingdwin 1	Discovery	Onshore	1979	0.02	1000		0.19	0.1	1818		0.4	0.02	1000		0.19								0
Salin Sub-basin	Ondwe 1	Discovery	Onshore	1912		1000		0.17		1818		0.3		1000		0.17								0
Salin Sub-basin	Pagan-Tuyintaung 1	Appraising	Onshore	1981	1	1000		1.17	5			5	1	1000		1.17								0
Salin Sub-basin	Pauktaw	Abd,no imp recv	Onshore	1910	0.3			0.3	1.5			1.5	0.3			0.3								0
Salin Sub-basin	Peppi	Intermit prod	Onshore	1976	1	50000		9.33	3.55	70000		15.22	1	37430		7.24	2001	0	2001	12570				2.1
Salin Sub-basin	Sabe	Producing	Onshore	1908	0.3	10000		1.97	1.5	16700		4.28	0.2	10000		1.87	2005	0.1						0.1
Salin Sub-basin	Shweliban	Abd,no imp recv	Onshore	1910	3			3	15			15	3			3								0
Salin Sub-basin	Tagaing	Abd,no imp recv	Onshore	1915	0.05			0.05	0.25			0.25	0				1941	0.05						0.05
Salin Sub-basin	Tetma	Temp shut-in	Onshore	1982	5			5	26.3			26.3	5			5								0
Salin Sub-basin	Thargyitaung	Producing	Onshore	2001	20	80000		33.33	100	115000		119.17	18.51	63943		29.17	2005	1.49	2005	16057				4.17
Salin Sub-basin	Yenangyat	Temp shut-in	Onshore	1864	16	10000		17.67	45	16700		47.78	0.93	10000		2.6	1942	15.07						15.07
Salin Sub-basin	Yengayaung	Prod, imp recov	Onshore	1889	275	200000		308.33	916	333000		971.5	48.62	97380		64.85	2005	226.4	2002	102620				243.48
Salin Sub-basin	Yenanma	Producing	Onshore	1920	4			4	20			20	0.64			0.64	2005	3.36						3.36
Chindwin Basin	Indaw	Abd	Onshore	1912	1.44	11000		3.28	10	17600		12.94	0	0			1942	1.44	1942	11000				3.27
Chindwin Basin	Yenan	Abd	Onshore	1922	0.02			0.02	0.14			0.14	0.02			0.02								0
Mergui Terrace	Aung Zay Ya 1	Discovery	Offshore	1997		200000	2.5	35.83		267000		44.5		200000	2.5	35.83								0
Mergui Terrace	Myeik 1	Discovery	Offshore	1995		5000		0.83		7500		1.25		5000		0.83								0
Mergui Terrace	Yemahnaung 1	Discovery	Offshore	1994		20000		3.33		30000		5		20000		3.33								0

Reserves (Myanmar)

Basin Name	Field Name	Prod Status	Loc	Disc Date	Oil Rec PP Mmb	Gas Rec PP Mmscf	Cond Rec PP Mmb	Total Rec Mmboe (PP)	Oil in Place PP Mmb	Gas in Place PP Mmscf	Cond in Place PP Mmb	Total Place Mmboe (PP)	Oil Remain PP Mmb	Gas Remain PP Mmscf	Cond Remain PP Mmb	Total Remain PP Mmboe	Cum Oil Prod Year	Cum Oil Prod MMb	Cum Gas Prod Year	Cum Gas Prod MMscf	Cum Cond Prod Year	Cum Cond Prod MMb	Cum Total Prod Year	Cum Total Prod Mmb
Mergui Terrace	Yetagun	Producing	Offshore	1992		2594000	82.33	514.66		4700000		783.33		2078250	67.5	413.88			2005	515750	2005	14.83		100.79
Moattama Basin	3CA-2	Discovery	Offshore	1973		210000		35		300000		50		210000		35								0
Moattama Basin	3CA-X	Discovery	Offshore	1983		250000	20	61.67		357000		59.5		250000	20	61.67								0
Moattama Basin	3DB-1	Discovery	Offshore	1974		20000		3.33				0		20000		3.33								0
Moattama Basin	3DE-1	Discovery	Offshore	1984		20000		3.33				0		20000		3.33								0
Moattama Basin	4BA 1	Discovery	Offshore	1974		2000		0.33		4000		0.67		2000		0.33								0
Moattama Basin	Badamyar 1 / 3DA-1	Discovery	Offshore	1974		350000		58.33		467000		77.83		350000		58.33								0
Moattama Basin	M-07 2	Discovery	Offshore	1975		25000		4.17		33000		5.5		25000		4.17								0
Moattama Basin	M-5/B-1	Discovery	Offshore	1996		500		0.08		1000		0.17		500		0.08								0
Moattama Basin	Sein	Producing	Offshore	1996		350000		58.33		467000		77.83		350000		58.33								0
Moattama Basin	Shwepyithay 1	Discovery	Offshore	1997		300000		50				0		300000		50								0
Moattama Basin	Yadana	Producing	Offshore	1983		5800000		966.67		8286000		1381		4481459		746.91			2005	1E+06				219.76
Pegu Yoma-Sittaung B	Indaing	Producing	Onshore	1996		3800		0.63		6000		1		881		0.15			2005	2919				0.49
Pegu Yoma-Sittaung B	Nawadat 1	Discovery	Onshore	1992		500		0.08		909		0.15		500		0.08								0
Pegu Yoma-Sittaung B	Syriam	Abd	Onshore	1971		5000		0.83		8330		1.39		5000		0.83								0
Rakhine Basin	Hinzane	Abd	Onshore	1900	0.05			0.05				0	0.05			0.05								0
Rakhine Basin	Kyaukpyauk	Abd	Onshore	1900	0.01			0.01				0	0.01			0.01								0
Rakhine Basin	Kyaukpyu-Yenandaung	Abd	Onshore	1900	0.05			0.05				0	0.04			0.04	1938	0.01						0.01
Rakhine Basin	Ledaung	Abd	Onshore	1900	0.05			0.05				0	0.05			0.05								0
Rakhine Basin	Leikkamaw	Abd	Onshore	1910	0.01			0.01				0	0.01			0.01								0
Rakhine Basin	Mya 1	Discovery	Offshore	2006		525000		87.5		750000		125		525000		87.5								0
Rakhine Basin	Shwe 1 ST1	Discovery	Offshore	2004		4000000		666.67		6000000		1000		4000000		666.67								0
Rakhine Basin	Shwe Phyu 2	Discovery	Offshore	2005		3900000		650		6000000		1000		3900000		650								0
Rakhine Basin	Yenanchaung (Cheduba Is.)	Abd	Onshore	1900	0.03			0.03				0	0.03			0.03								0

Carlos Cramez
Switzerland

Carlos Cramez
Switzerland

Carlos Cramez
Switzerland

Carlos Cramez
Switzerland

Carlos Cramez
Switzerland

Carlos Cramez
Switzerland

Reserves (Pegu Yoma- Sittaung)

[illegible]

Carlos Cramez
Switzerland